

B570A WHEEL FELLER BUNCHER



SOLID STABILITY & EXCELLENT RIDE.

The transverse mounted engine, low center of gravity, and wider axles provide rock solid stability. The cab sits between the axles instead of close to the front frame, delivering a topnotch ride for the operator. Improved foot pedal angles and 2 inches more leg room enhances operator comfort.



IMPROVED TRAVEL.

Higher ratio axles reduce the torque in the drive train by almost 40%. The improved axle ratio also creates 5% more drawbar power and 10% more ground speed in turtle mode. Fully adjustable speed settings let the operator set working ranges and bump through the ranges during operation.



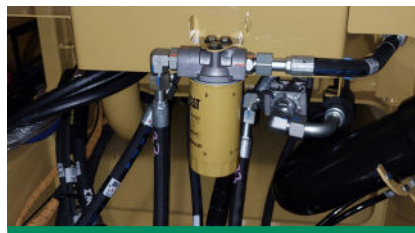
SYSTEM SIMPLIFICATION.

Simplified electrical and hydraulic systems, fewer electrical pin connections and sensors, and an overall reduction in hoses and fittings maximize reliability. Improved front frame reduces damage to lift cylinder hoses, provides access to hoses through a removable guard, and reduces debris entry.



CAB DURABILITY.

The cab features integrated LED lights, removing the light boxes from the previous series. 1.7x thicker skylight with cross bars removed provides an unobstructed view to tree tops. The new roof angle deflects debris more efficiently and has an overall thicker cab roof for durability.



SAW CIRCUIT RELIABILITY.

An optimized saw circuit, that includes a dedicated saw valve results in more power and efficiency. Case drain filtration adds an additional level of protection and confidence to the system. Priority settings maximize saw recovery or propel to match the application.



EXCELLENT SERVICEABILITY.

Pressurized engine compartment keeps debris out of the machine reducing cleaning. The sloped hood sheds debris to prevent build up. Ground level fuel fill, electric hydraulic oil fill pump, and excellent engine access deliver superior serviceability making it quick and easy to do daily maintenance.



B570A SPECIFICATIONS

ENGINE MODEL	Cat® C7.1 Stage 5		WHEELBASE	115"	2921mm	GROUND CLEARANCE	19.4"	493 mm
GROSS POWER	202 hp	151 kW	FUEL CAPACITY	81.6 gal	309 L	TRANSPORT WIDTH	9' 1"	3.03 m
ENGINE SPEED	2200 rpm		DEF CAPACITY	5.0 gal	19 L	TRANSPORT HEIGHT	10' 11"	3.33 m
WEIGHT	35,340 lb	17 207 kg	HYDRAULIC SYSTEM	71.1 gal	269 L	TRANSPORT LENGTH	24' 11"	7.59 m
FELLING SAWS SPECIFICATIONS		BH230 BUNCHING SAW		GP230 CENTER POST		GP230 GENERAL PURPOSE		
ACCUMULATION AREA		8.6 ft²	0.80 m²	5.1 ft²	0.47 m²	5.8 ft²	0.54 m²	
MAX SINGLE CUT		23.0"	584 mm	23.0"	584 mm	23.0"	584 mm	
WEIGHT		6,275 lb	2846 kg	7,100 lb	3220 kg	6,150 lb	2790 kg	

Base configuration includes 28L-26 16PR Tires, BH230 bunching saw, and full tank of fuel. Weight add 1,720 lb (780 kg) for 30.5-32 tires, add 2,560 lb (1161 kg) for 30.5L-32 2X Ring tires, add 1,720 lb (780 kg) for 67-34 tires. Height and ground clearance add 4.0" (10.2 cm) for 30.5-32 tires, 6.9" (17.5 cm) for 67-34 tires.

POWERTRAIN

Cat® C7.1 engine certified to EPA Stage 5 with single turbo
 Primary and secondary fuel filters, including water separator
 Electric fuel priming and transfer pump
 Centrifugal engine air pre-cleaner
 2-Stage engine air cleaner
 Cross-flow cooling system w/side by side cores including a/c and fuel cooler
 Hydraulic on demand reversing cooling fan
 Electronic reversing pressurizing fan
 2-Speed, hydraulically shifted transmission
 New higher ratio axles
 Momentary front differential lock
 On/off rear differential lock
 Heavy-duty driveshafts
 Lubed for life universal joints except center joint
 Spring applied, hydraulically released parking brake

OPERATOR ENVIRONMENT

Enclosed OPS/FOPS/ROPS certified tilt cab with increased roof thickness
 Unobstructed skylight
 Reverse slope 3-piece windshield
 Slider windows & door screens
 High capacity HVAC system
 Pressurized water tank in rear of machine
 Air suspension seat with harness seat belt
 Joystick steering controls
 Adjustable operator controls
 Weiler programming system
 Terrain selection mode
 Road steer mode
 6 speed selections
 Joystick gather arm(s) controls
 AM/FM/Bluetooth radio
 24V to 12V converter, 1 x 12V power port, and 1 x USB port
 2 beverage holders

SALES AND SERVICE

Sold and serviced exclusively through Weiler Forestry dealers worldwide.

HYDRAULICS

Weiler software monitors performance and delivers power where needed
 Variable displacement pumps with load-sense hydraulics
 Oversized in-tank filter
 Dedicated saw circuit with case drain filter
 Electric hydraulic oil fill pump

ELECTRICAL

24-volt electrical system with 2 x 12-volt batteries
 Main disconnect switch with Diesel Exhaust Fluid (DEF) purge indicator light
 4 LED working lights integrated into the cab
 Product Link™ Ready

OTHER STANDARD EQUIPMENT

Double walled box section frames to support bending and twisting forces
 Field proven dual tapered roller bearing upper and lower center hitch
 Pressurized engine, hydraulic, and Clean Emission Module compartments
 Ground level fuel fill with right hand DEF fill
 Single side engine service

OPTIONAL EQUIPMENT

Cab Sweeps
 Foot Rest
 Skylight Sunshade
 CB Radio
 Phone Holder
 Product Link™ (PL243 Cellular or PL631 Satellite)
 Rear-view Camera with 10" Monitor and 2 x Rear & 2 x Front LED Lights
 Fire Extinguisher
 Water Tank Fill w/ RV Antifreeze Mixture (good to -12 deg F)
 Carbide or Steel Cutting Teeth
 Saw Speed Sensor
 28L-26 Tires - Overall Width 117.0" (2.97 m)
 30.5L-32 Tires - Overall Width 119.1" (3.03 m)
 30.5L-32 2XRing Tires or 2XRing Front Only - Overall Width 119.1" (3.03 m)
 67-34 Tires - Overall Width 128.7" (3.27 m)
 73x44-32 - Overall Width 147" (3.7 m)

WARRANTY

12 months standard. Extended warranty available.

