



330 Lee Industrial Blvd
Austell, GA 30168
(770) 241-6315

**FUEL
ANALYSIS
REPORT**

Condition Summary

STATUS: **MONITOR** ON **4/2/2018**

Sample Report

Compartment **FUEL TANK 521 gal**

REPORT DATE	LAB CONTROL NUMBER	ANALYST	SAMPLE DATE
4/19/2018	D500-48102-9401	RPB	4/2/2018
WORK ORDER NUMBER	EQUIPMENT ID / MACHINE SN	JOBSITE / LOCATION	
E647595	211028	ANNEX 2 BASE TANK	

INTERPRETATION

Trace amount of flake like scale or rust precipitates. Fuel slightly cloudy suggesting probable suspended or soluble water. Trace metals iron and boron indicating rust and possible fuel additive (biocide). Millipore filter showed tan / brown discoloration. Moderate number of shiny metallic particles, fairly large rust or scale particles and black oxides. Recommend bulk fuel filtration / coalescer to remove particulate debris and moisture. Inspect fuel filters for visible debris, change filter / screen as necessary. Biodiesel blends under long term storage conditions may be susceptible to oxidative degradation and free glycerin build up. Exposure to heat, air, metals, water and light exposure contributes to degradation of fuel quality. Fuel stabilizer and antioxidant additives can be effective at stabilizing biodiesel blends.

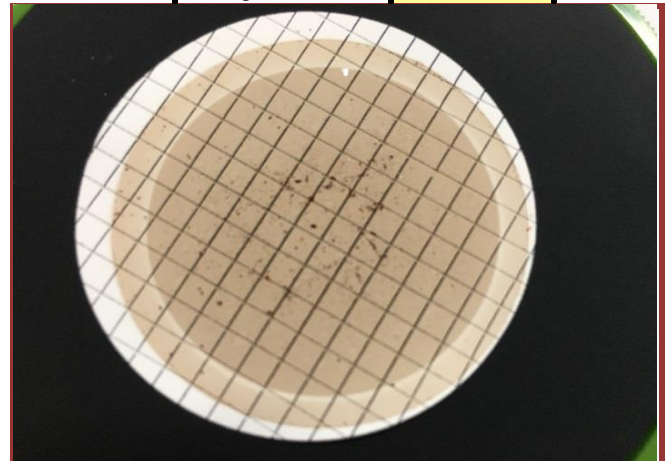
Test Description

Results

Magnification

10X

Biodiesel %	3.6
Appearance / Color	RED, SLIGHT CLOUDY
Precipitate Amount	TRACE
Precipitate Appearance	FLAKES
Precipitate Color-Description	RUST
Clear & Bright	NOT CLEAR & BRIGHT
Free Water %Vol.	<0.05
Odor	NORMAL
Haze Rating (1-6)	1
Color & Particle Assessment	B6-F
Particulate Contamination, mg/L	15.0
Particle Count - ISO CODE	15/11
Microbial Contamination	NEGATIVE
Bacteria Count	<LDL
Fungus Count	<LDL



Photomicrograph 1 **1 sq = 1.8 mm** **0.80 μm**

Photomicrographs showing moderate discoloration, metallic particles, rust, scale and black oxides.

ICP Metals, PPM

Fe	Cr	Al	Ni	Pb	Sn	Cu	Ag	Si
2	0	0	0	0	2	0	0	0

B	Na	K	Mo	P	Zn	Ca	Mg	Ti
9	2	0	0	0	1	0	1	0

Accuracy of test data and interpretation is dependent upon a sample representative of the condition of the compartment sampled, and complete and concise information regarding the equipment and sample.

Photo 2 100X

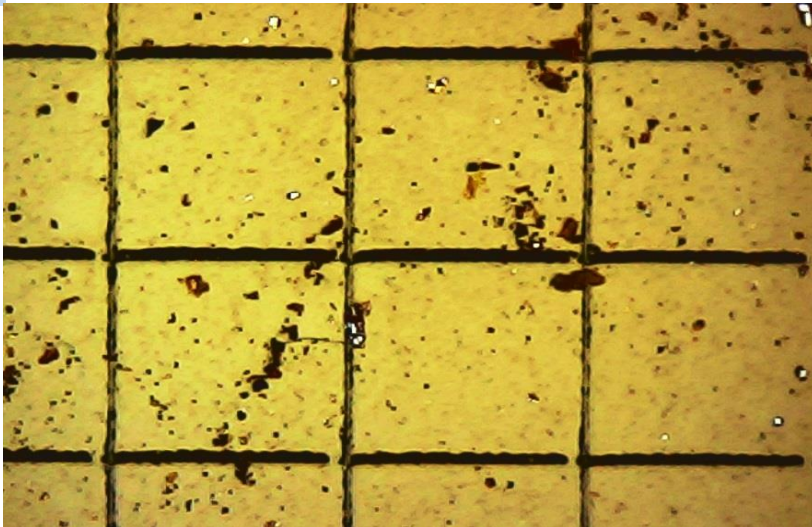


Photo 3 100X

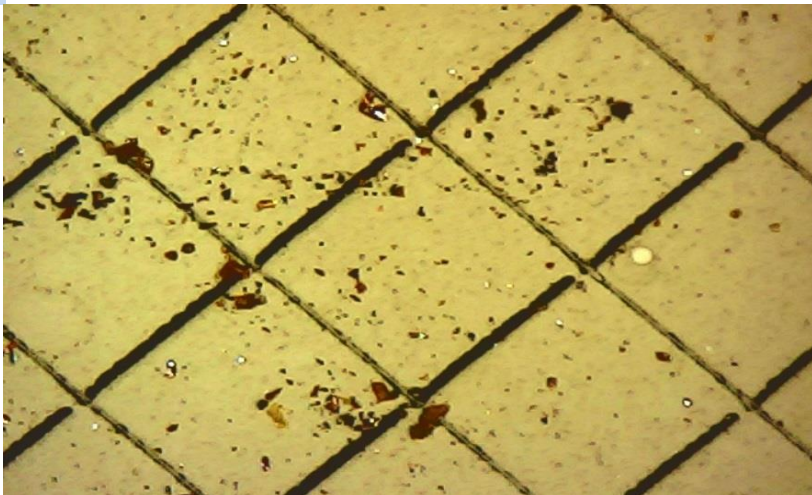


Photo 4 500x